

FOCUS



CHURCH *of* CHRIST
PASIR PANJANG, SINGAPORE

Sunday Morning Worship



RESTORED

FOR RESTORATION

Inaugural Service @ 347 | 31 March 2024

After two years of “wandering in the wilderness”, we have finally returned home to 347 Pasir Panjang Road! What a journey it has been - we have witnessed God’s compassion and providence at every step of the way. By His grace, we have grown in our understanding of who we are as God’s family and what it means to be His community to the world around us.

As God restored us once more to our home, may we truly become a Restored People. As we dwell in this new home, may we find this to be a place of love, joy and peace. May we find rich fellowship and unending forgiveness. May we be transformed into a New People, made in the image of Christ, and so welcome others into this place that they can also call home.

Sunday Morning Worship

Order of Worship

Welcome

Announcements

Psalm 95

Hallelujah Praise Jehovah

Holy, Holy, Holy

How Great Thou Art

Sermon

Come People of the Risen King

Communion

Giving

Shepherd's Blessing

Closing Prayer

Trust and Obey

Giving

Sunday Giving: **\$7312 / \$12,000**



General Fund
S76SS0008AGFD



Missions Fund
S76SS0008AMFD



Building Fund
S76SS0008ABFD

If you plan to make a contribution via cheque, please make sure it is made payable to "**Church of Christ, Pasir Panjang, Singapore**". Please ensure that you write the full name so that the cheque can be processed smoothly.

Family News



Deeper



We held our first event at the building on Friday, 29 March 2024! This year, our annual Church Retreat was a time for our PP family to begin a journey where we go “Deeper Into Prayer!” It was a fitting first event in the new building, where we begin in worship and prayer and praise of the God who made this all possible! May it be a foretaste of times to come!





Facility Stewards

The FAST Team has appointed 18 Facility Stewards to assist in stewarding the facilities we have been blessed with, and to nurture a culture of facility stewardship within the ministries they represent, including:

- Seniors Ministry
- FFF Ministry
- GEMS Ministry
- Gardening Ministry
- Deaf Ministry
- Youth Ministry
- SING Ministry
- AV Ministry
- Chinese Congregation



While our regular opening hours are Tuesdays to Fridays and Sundays, 9am to 4pm, Facility Stewards are empowered to open and close our facilities on behalf of their ministries from 8am to 930pm on Tuesdays to Sundays (e.g. ministry events, workshops, meals).



Church WiFi

If you need to connect to WiFi, please use the network “PPCOC”. The password is “ANewPeople”





Hot Water Dispenser

We are currently piloting the use of a smart switch to control the hot water dispenser at Level 1 only.

The switch has been programmed to be permanently on from 8am to 1:30pm on Sundays.

If you wish to use the hot water dispenser at other times, please press the touch button on the left of the dispenser. It will turn the dispenser on for 60 mins and turn off automatically after that.

This is part of our efforts to steward our natural resources and to lower our electrical consumption.



Church Commissioning: Questions and Volunteering

Do you have any questions about our Church Commissioning? Would you be interested to play your part as a Host? Let us know by scanning or clicking the QR code here!





CHURCH of CHRIST
PASIR PANJANG, SINGAPORE

Breakfast & Blessings



347 PASIR PANJANG ROAD, S(118688)
1 MAY 2024 • 930^{AM} – 1200^{PM}

Come celebrate with us as we
move into our new building!

Join us for a fun-filled morning
over breakfast at our Church
Commissioning, as we honour
God in community.

Come, taste and see that
it is good!

KEY HIGHLIGHTS

BREAKFAST

CHURCH BUILDING TOUR

KIDS' CORNER

CHURCH COMMISSIONING &
CELEBRATING COMMUNITY

RSVP HERE:
[CUTT.LY/PPCOCRSPV](https://cutt.ly/ppcocrsvp)



Connect With Us

Meet Our People

Elders

Simon Goh
Peter Lim
Lim Swee Aun
Pang Tee Liang

Deacons

Lim Kok Hin
Frederick Yu
Romaine Jackson

Staff

Irvin Wan
Kyle Hooper
John Lim
Liesl Low
Josephine Seah

Pledge and Building Fund Committee

Peter Lim
Jim Kawi
Grace Mariaraja

Office Address:

347 Pasir Panjang Road S118688



Facility Stewardship (FAST) Team

Peter Lim
Jason Mok
Donald Siew
Irvin Wan
Josephine Seah

RETURN TO 347

Our Values



Because the building is an **Image** of us as we are Images of God, how we use it **reveals who God is** to others!



Because we are **generous hosts**, we **welcome others** to the Table.



Because we are **compassionate to others who come after us**, we **restore** each venue we use to its **right state**.



CHURCH *of* **CHRIST**
PASIR PANJANG, SINGAPORE

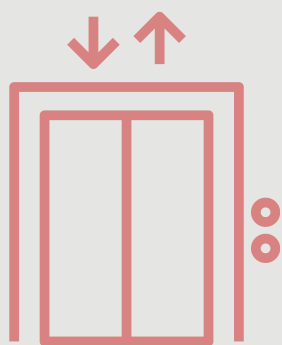
GENERAL NOTES



Church Opening Hours

9am-4pm on Tuesday-Friday and Sunday

Opening hours may vary for special events and will be updated on our website



Use of Lift

Priority will be for **parents with prams, wheelchairs and persons with mobility needs**. We invite all able-bodied brethren at heart to take the stairs!



Parking

Due to limited parking at the building, priority will be given to staff, new visitors, and those with mobility needs. We invite drivers to park for free at:
The Alpha (10 Science Park Road)

A **shuttle bus** service between the Alpha and the church will run continuously from **9am to 1pm**.

AUDITORIUM ZONING

STAGE

Deaf Ministry

Worship Team

Quiet Zone

Families with
older children

Families with
young children

Open Area

Room 203: The Annex 2
Alternative Seating Area
(Family Friendly)

AUDITORIUM: ENTERING

Level 2



Before 11am: All doors open
After 11am: Only **CENTRE** doors open

Level 3



Before 11am: Both doors open
After 11am: Only **RIGHT** doors open

*Fire exits (front staircase) are one-way (outwards only)

AUDITORIUM RULES



Food and drinks

Food and drinks (except water) are not allowed in the Auditorium except for young children in the family-friendly zone.

Parents are requested to offer snacks that are not crumbly or oily.



Trash

Dispose of all trash that you see into the bins.

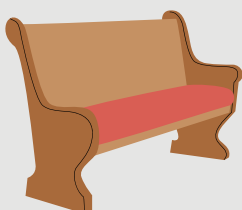


Stage

For your safety, please refrain from going up the stage.

Furniture

Treat all furniture and equipment with care and respect.



ROOM RULES



Shoes

If applicable, remove shoes before entering classrooms.



Trash

Dispose of all trash that you see into the bins.

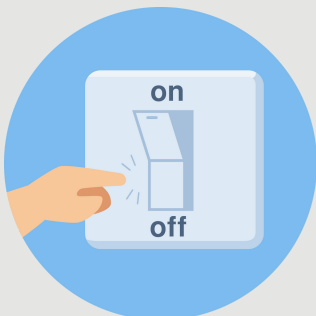


Furniture and Equipment

Use all furniture, materials, equipment and toys (if applicable) responsibly.



Return all furniture, materials, equipment and toys (if applicable) to their original locations after use.



Switch Off After Use

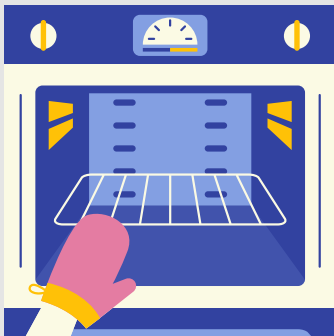
Switch off all lights, aircon units and TVs before leaving.

KITCHEN RULES (DURING USE)



Hygiene

Practice good personal hygiene and follow proper food handling and storage procedures to prevent contamination.



Furniture and Equipment

Handle furniture, equipment and appliances with care, and report any malfunctions and breakages promptly to the FAST team.



Labelling

Label all personal items to be placed in the refrigerator neatly and clearly with the stickers provided.

KITCHEN RULES (AFTER USE)



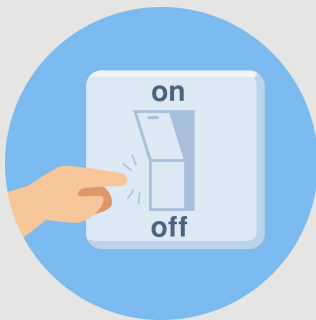
Clean up

Clean up the Kitchen and leave it in the same condition in which you found it.



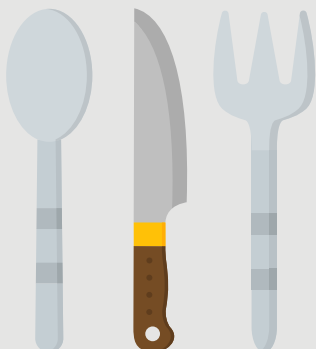
Tidy up

Ensure that all items and equipment are kept in their designated places.



Switch Off After Use

Turn off the oven, microwave and stove, **BUT NOT the refrigerator.**



Personal Cutlery

Take your personal utensils, cutlery and appliances with you when you leave.

FACILITY REQUEST FORM



Thank you for joining us in stewarding our new building for the blessing of all! Rooms will be available for request from **31 March onwards** via [this Google Form](#).

After receiving written approval from the PP staff, users may use the space in accordance with the Terms of Use stated in the form. If you have any questions or clarifications, please drop us an email at hello@ppcoc.org.

Thank you!