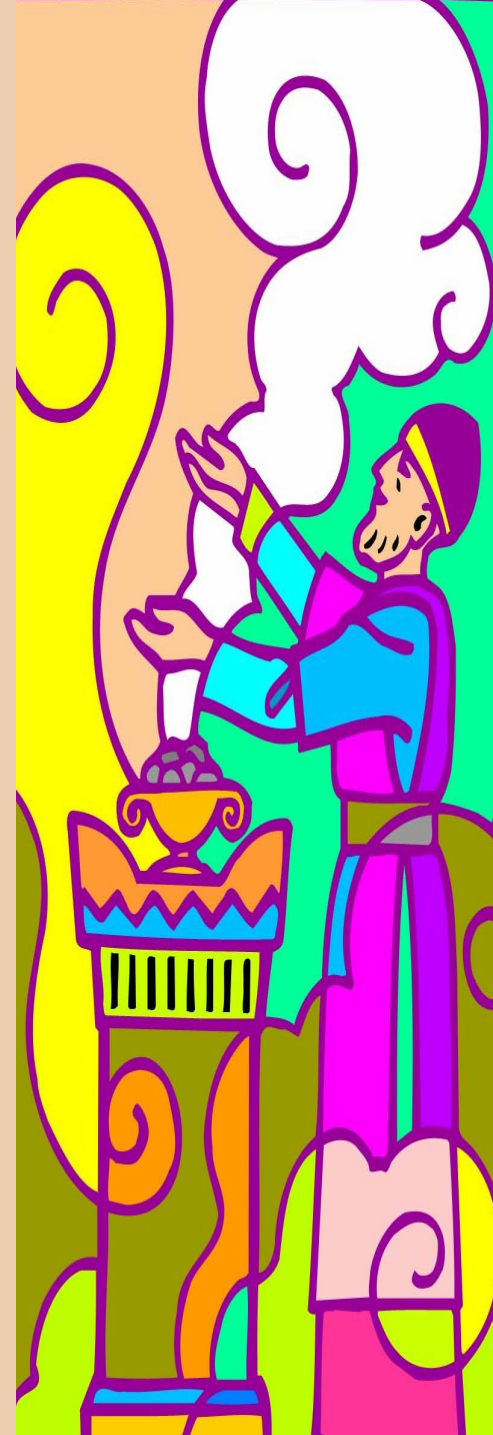


# THE TABERNACLE

Holiness of God



# THE TABERNACLE

1. Worship from Adam to Aaron..01.07.07
2. Where we meet God.....08.07.07
3. Enter His Gates.....15.07.07
4. The Holy Place.....22.07.07
5. Enter His Presence.....29.07.07
6. Ministers to the Lord.....05.08.07
7. The Debt of Sin.....12.08.07
8. The Devotion of Surrender.....19.08.07
9. Positioning for Worship.....26.08.07
- 10. False Worship.....02.09.07**
11. True Worship.....09.09.07
12. Christ, Our High Priest.....16.09.07



**Review of last week lesson.**

# **POSITIONING FOR WORSHIP**

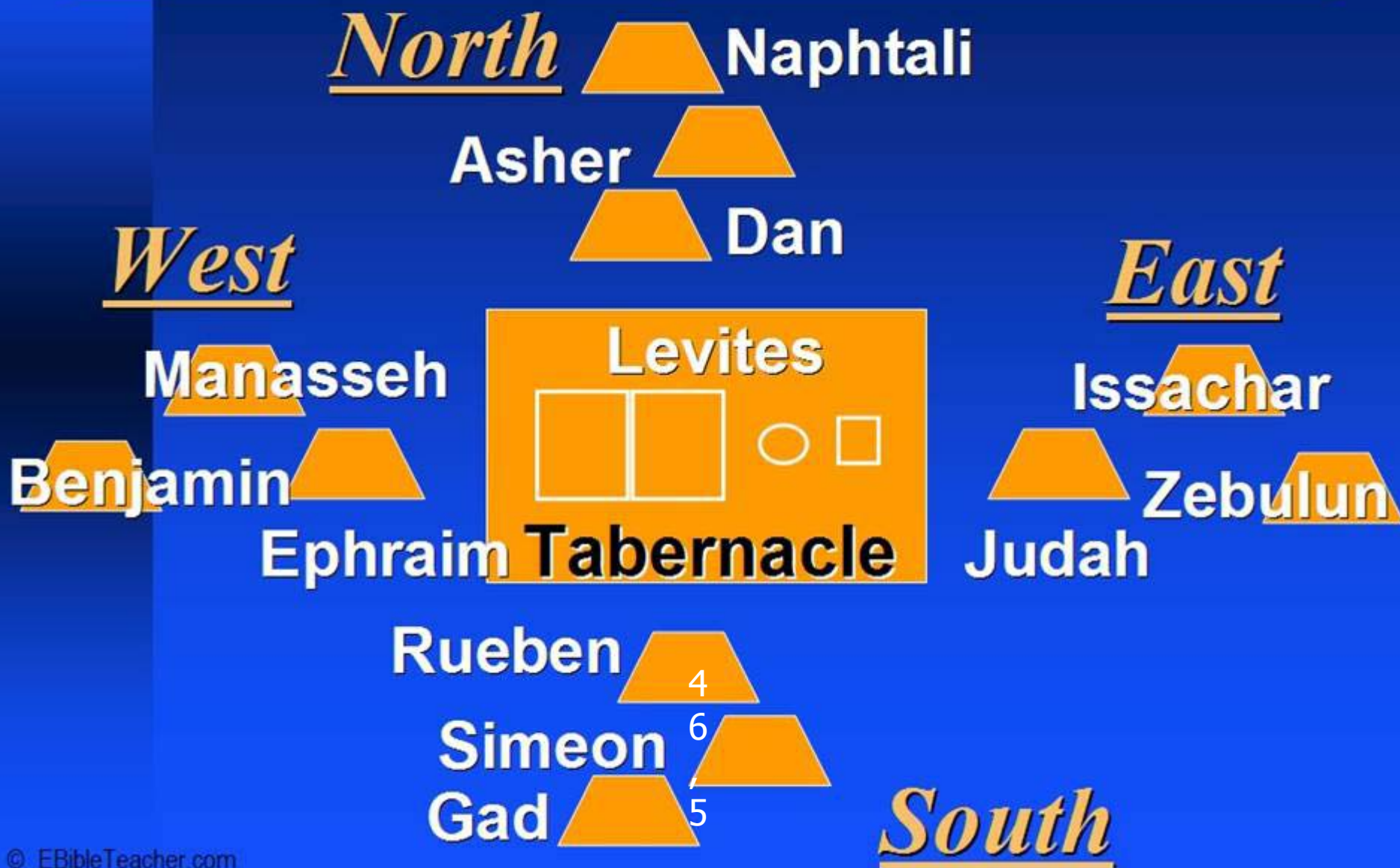
- 1. The Tabernacle's Position in the camp**
- 2. The Tabernacle's Compass Position**
- 3. The Positioning of the Tabernacle's Content**
- 4. The Tabernacle's Positioning as it was carried**



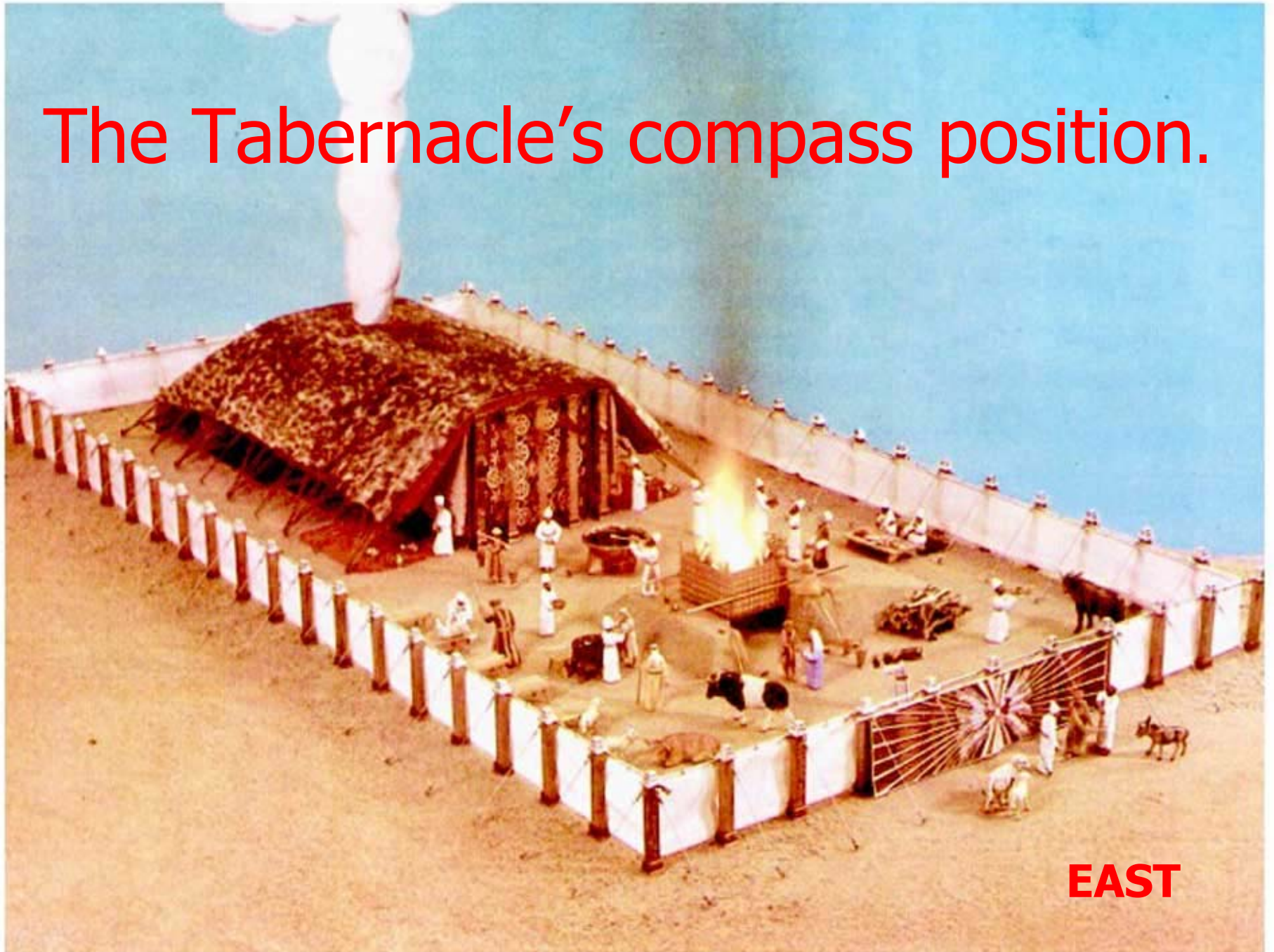
# ARRANGEMENT OF TRIBES AROUND THE TABERNACLE WHILE IN THE WILDERNESS



# Israelite Camp & Tabernacle



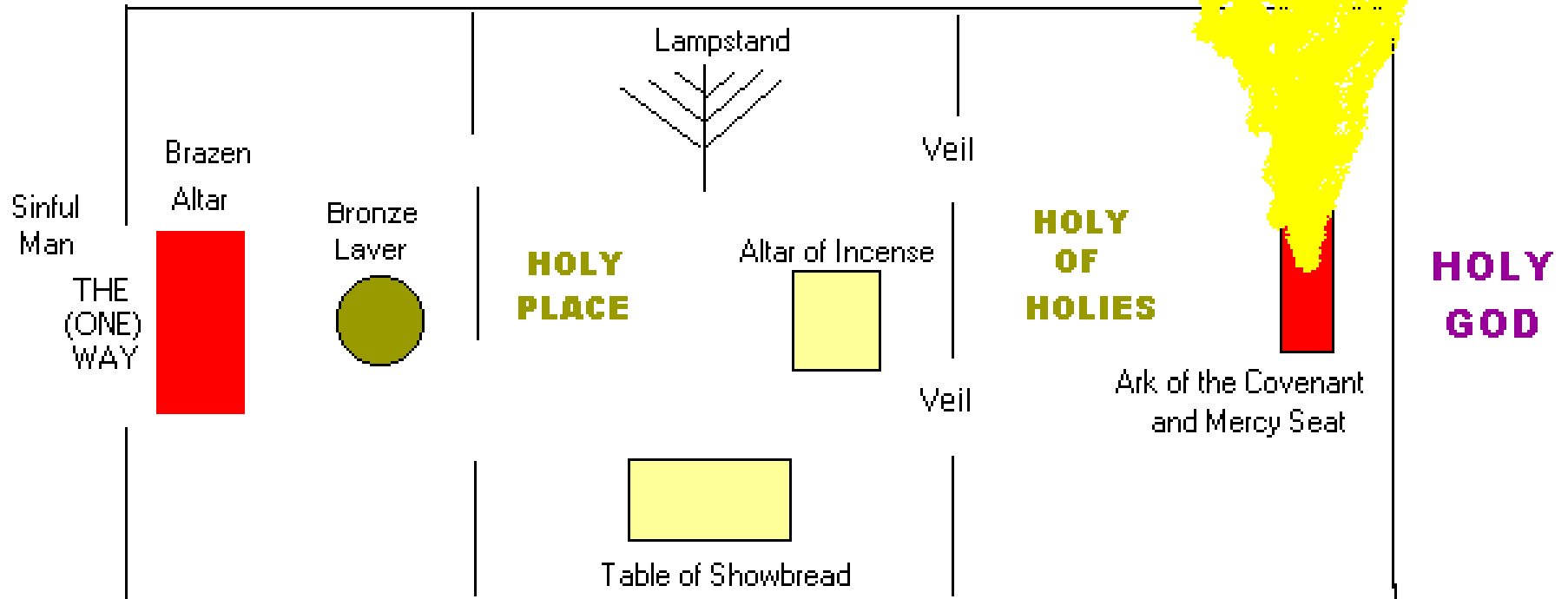
# The Tabernacle's compass position.



# THE TABERNACLE

How Holy God Has A Relationship With Sinful Man

**SHEKINAH CLOUD  
OF GLORY**



Brazen Altar- The Cross of Christ

Laver- Sanctification

Table of Showbread- Christ is the Bread of Life

Lampstand- Christ is the Light of the World

Altar of Incense- Christ Our Intercessor

Ark of the Covenant- Christ is the Word Personified

Mercy Seat- Blood of Christ

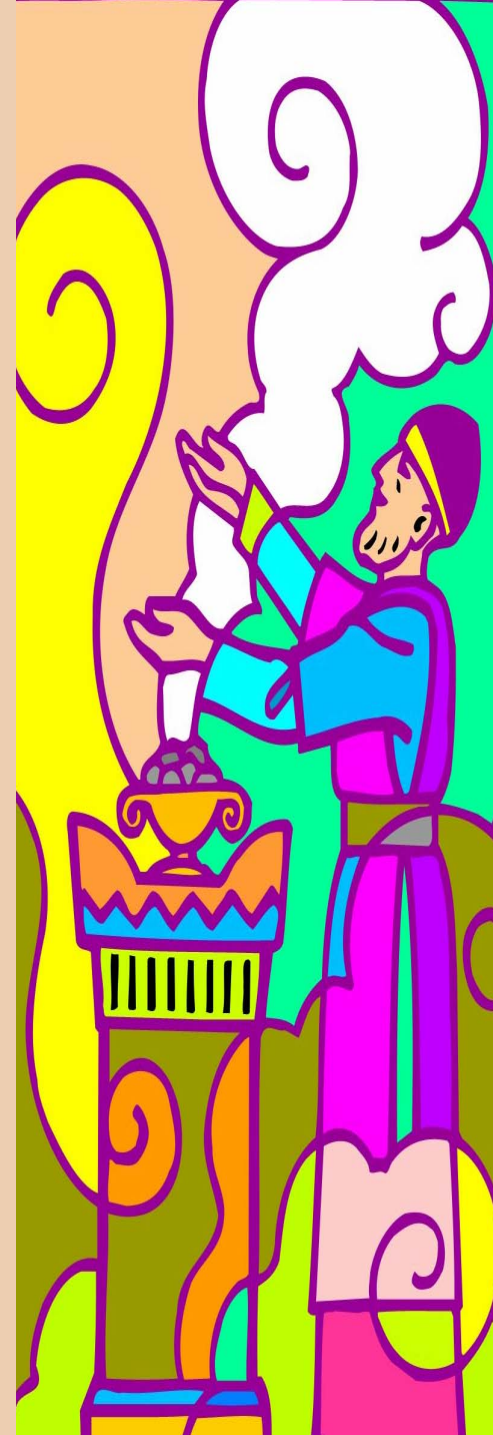
Delivers from the Penalty and Power of Sin

# Tabernacle Components

1. The **Gate** is the place of **entry**
2. The **Bronze Altar** is the place of **reconciling**.
3. The **Laver** is the place of **cleansing**.
4. The **Lamp Stand** is the place of **light**.
5. The **Table** is the place of **dining**.
6. The **Altar of incense** is the place of **prayer**.
7. The **Ark** is the place of **fellowship**.

# FALSE WORSHIP

Disobedience to God's Order for  
Worship and its Consequence



# FALSE WORSHIP

1. The Golden Calf
2. Nadab and Abihu
3. The Rebellion of Korah
4. Saul at Gilgal



# Moses on the mountain; Israel at the bottom.

Background:

400 yrs of slavery.

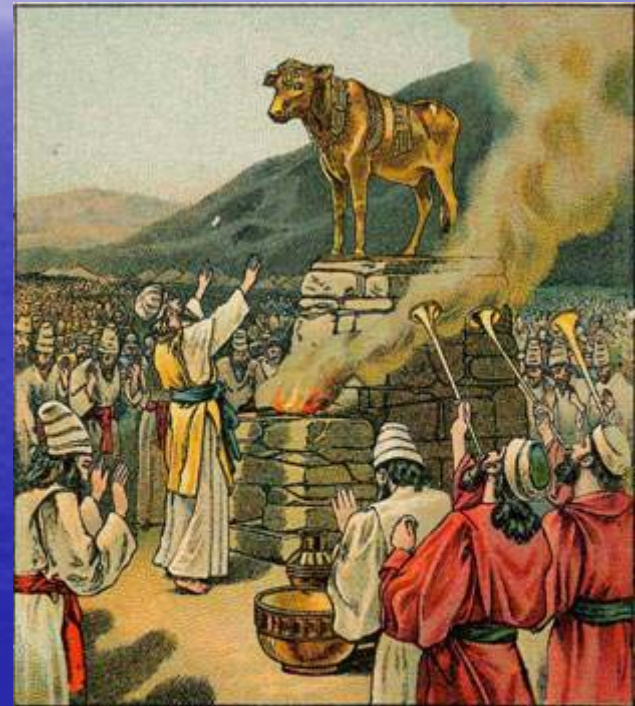
Set free by –

10 supernatural plagues.

Parting the Red Sea.

In a short time–

Bowing before an Idol.



COPYRIGHTED, 1891 BY PROVIDENCE LITH. CO.

WORSHIPPING THE GOLDEN CALF.

Ex. 32:1-35.

GOLDEN TEXT:—Thou shalt have no other gods before me.

Ex. 20:3.

# THE GOLDEN CALF

God removed His people from Egypt; Now He must removed Egypt from His people.



# **“Let all things be done properly and in an orderly manner.” 1 Cor.14:40**

- Leaders are to follow God and the congregation is to follow the leaders who are the most spiritually mature.
- Worship runs awry when leaders refuse to lead and the followers refuse to follow.

**True worship is not about us, it is about God-what He desires and deserves.**

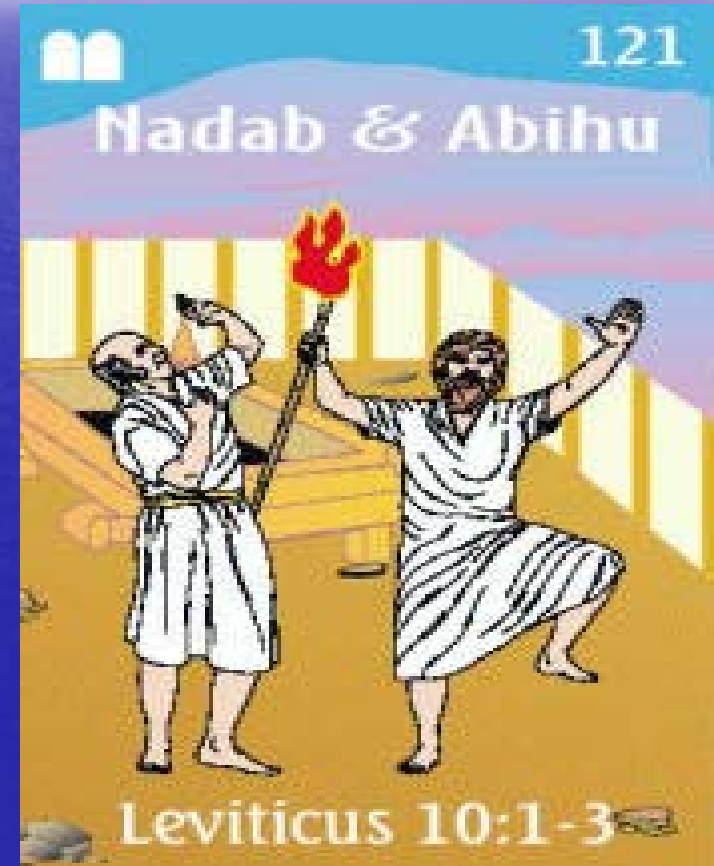
# Moses' prayer of intercession.

1. Please do not destroy these people, because You are their savior. ( 11)
2. If your people are allowed to perish, the pagans will blaspheme your name and reputation.( 12)
3. Your cannot go back on your promises to bless them and to give them the land you promised to Abraham, Isaac, and Jacob. (13)

# What was the sin of Nadab & Abihu?

“ By those who come near Me  
I must be regarded as holy;  
And before all the people  
I must be glorified.” (3)

True worship must respect  
God’s holiness.



# Fire from Heaven devoured them.

“ the end justifies  
the means.”  
is a big lie.

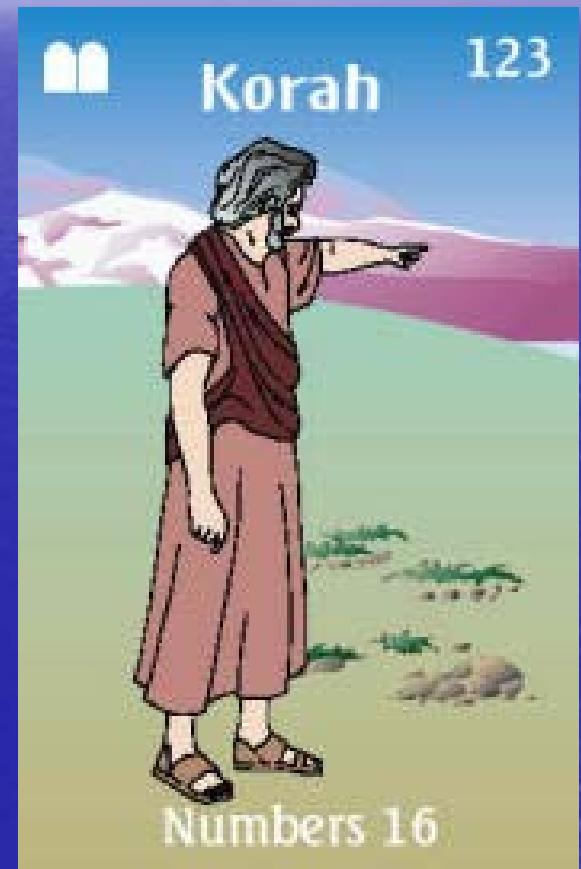
The truth is, the  
right end is never  
reached by the  
wrong means.



# What was Korah's argument?

They rightly said, "all the congregation are holy" but they failed to recognize that Moses and Aaron were God-appointed leaders.

It is a rebellion against the leadership God has put in place.



**What does this incident of Korah teach us about the potential hindrances to our worship?**

Sin is serious to God, and so is leadership. If we grumble and complain against God's appointed leaders, we will be unable to worship as we should. Even if we have trouble trusting leadership, we must trust God, who appoints the leaders to accomplish His purpose.

# Saul at Gilgal

We saw God place a new test in front of Saul – a new opportunity for him to demonstrate a willingness to fully follow God.



1 Samuel 15

# Saul was partially obedient.

- Killed all the people
- Destroyed everything
- Killed the animals
- Except Agag, the King
- Except the valuable
- Except the best

God says Saul has “ ..turned back from following ME, and has not carried out My commands.” (11)

**What we would call partial obedience, God calls disobedience.**

# Saul stand in stark contrast to David

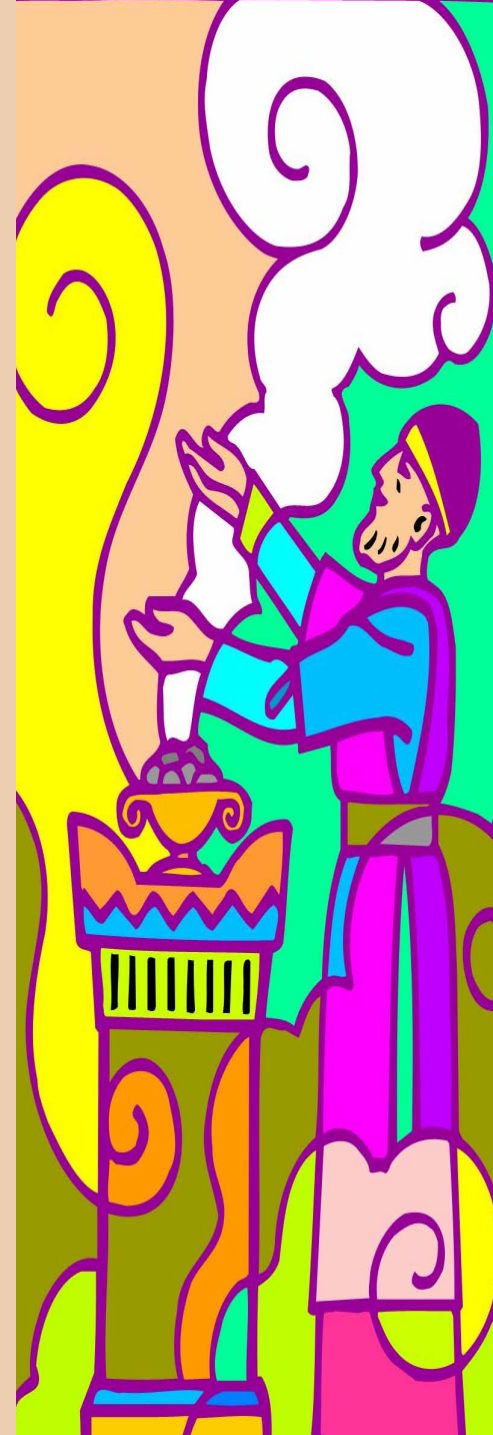
- When confronted, Saul lied
- After people's praise
- David repented
- After God's heart

**"This people honors Me with their lips, but their heart is far away from Me"**

Matt.15:8 & Isaiah 29:13 capture very well the nature of Saul's "worship."

# TRUE WORSHIP

Worshiping God  
in Spirit and in Truth



# TRUE WORSHIP

1. The Father seeks True Worshippers
2. Jesus Speaks the Word about True Worshippers, Part One
3. Jesus Speaks the Word about True Worshippers, Part Two
4. The Holy Spirit leads the True Worshippers

